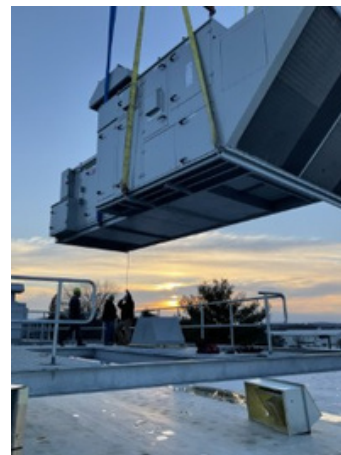


CAPABILITIES STATEMENT

Burke & Company, LLC dba S. P. McCarl & Company is a WBE-certified mechanical contractor serving Pennsylvania, West Virginia, and Maryland. We are committed to delivering quality projects with a strong emphasis on safety, on-time performance and excellent customer service. We have successfully completed projects of various sizes and scopes, from small repairs to large-scale installations in various sectors, including industrial, institutional, governmental, commercial and residential. We have a large pool of qualified field and office personnel who can be assigned to different projects. We use our own sheet metal and pipe fabrication shops to meet our clients' schedules, specifications and budgets.



At the heart of our company is a simple promise: *We Do the Right Thing*. This guiding principle shapes our culture, drives our decisions, and supports our mission to be a place where people grow and succeed.

CORE COMPETENCIES

SERVICES

- Full-service mechanical contracting
- Sheet metal fabrication and installation
- Pipe Fabrication
- HVAC
- Plumbing
- Process Piping
- ASME Code Welding: R, PP, S and U Stamps
- Design-assist and budget development
- CADD/BIM Coordination
- Maintenance Contracts
- 24/7 Service Department
- Pipe Freezing
- Duct Cleaning



INDUSTRIES



- Pharmaceutical
- Power & Energy
- Pulp & Paper
- Specialty Manufacturing
- Telecommunications
- Transportation
- Commercial
- Residential
- Automotive
- Chemical
- Correctional
- Educational/Institutional
- Energy Services/ESCO
- Food Processing
- Government
- Health Care



OUR PROVEN PROCESS

We meet every project with unmatched enthusiasm and expertise.

1. **Gather Information** – Discover client needs and concerns to build estimates, budgets and/or design-assist solutions.
2. **Plan & Collaborate** – Initiate coordination and collaboration internally and externally to identify scope and prefabrication opportunities as well as develop a safety plan.
3. **Implement & Execute** – Plan and execute work with care, safety, and responsiveness.
4. **Monitor & Evaluate** – Continuous review and collaboration to ensure project success.
5. **Close Out** – Final review of key successes and lessons learned through job reviews.
6. **Connect** – Build lasting relationships and discover future opportunities.

DIFFERENTIATORS

- **GRIP Values:**
 - We **G**ot This
 - We Do The **R**ight Thing
 - We Are **I**nclusive
 - We Show Our **P**assion
- Scalable Workforce
- In-House Fabrication
- Client-Centric Approach



CONTACT INFO

2221 9th Avenue, Altoona PA 16602
info@spmccarl.com
(814)946-0859
spmccarl.com

CODES

CAGE Code: 8B0H9
NAICS Code: 238220
UEI: RGMPBDHNP8Z4

